

How you CAN recycle

It's easy to recycle your steel packaging

Did you know that each year the UK uses around 12 billion steel cans? That's nearly 600 cans for every household. They are all recyclable and now you can take part!

Steel is one of the most common packaging materials, with two out of three cans on the supermarket shelf made of steel.

Most cans found in the home, often called 'tins' because they have a thin layer of tin around them, are actually made of steel. They are easily recyclable and all contain up to 25% recycled steel. They include

- food cans
- drinks cans
- pet food cans
- aerosols and household products such as deodorants, polishes, cleaning products etc
- paint cans
- promotional packaging such as confectionery and spirits packaging, and
- caps and lids for food and drink containers

Steel is 100% recyclable, and can be recycled time and time again. Scrap steel is an essential part of the steel production process, and all new steel products contain up to 25% recycled steel.



What can you do?

Recycling your steel cans couldn't be easier - steel cans are easily identified by using a magnet - if it sticks, it's steel!



99% of local authorities offer kerbside schemes, with over 90% collecting cans. Just call your local authority to find out what recycling schemes operate in your area.

You can also recycle your steel cans by putting them in the can banks at local civic amenity sites or at the recycling areas at your local supermarket.



For further information on how to recycle steel cans in your area, contact your local authority or visit www.scrib.org.uk

SCRIB
steel can recycling information bureau

How you CAN recycle

More fast facts about steel cans



There are more than 2.5 billion steel cans recycled in the UK each year - equivalent to the weight of 18,000 double decker buses!

The thinnest part of a steel can wall measures only 0.07mm thick - that's thinner than a human hair

It would take 1,087 steel drinks cans stacked end to end to reach the top of the London Eye or 2,818 to reach the top of the Eiffel Tower

Every year 1.8 billion drinks cans are made of steel in the UK

Recycling seven steel cans saves enough energy to power a 60-watt light bulb for 26 hours

Steel cans are becoming lighter with the average weight of a soft drinks can in 2006 being only 21.4g. In 1980, it was 31.2g

There are more than 300 million steel cans used each week over the Christmas period. Placed end to end, these cans would stretch three quarters of the way round the Earth



Recycling one tonne of steel cans saves 1.5 tonnes of iron ore, 0.5 tonnes of coal & 40% water usage

Recycling one tonne of steel scrap saves 80% of the CO₂ emissions produced when making steel from iron ore

When steel cans are recycled, they can be used to make a huge range of new steel products including cars, bridges, washing machines or even new steel cans!

All steel products contain up to 25% recycled steel so your can of baked beans could once have been part of a car, or any other steel product.

The recycling rate of all steel packaging is 50%.

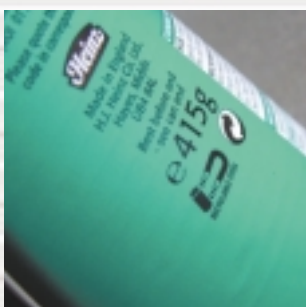


To find out more about steel packaging recycling, please contact:



Corus Steel Packaging Recycling
Port Talbot
SA13 2NG
South Wales

T +44 (0)1639 872516
F +44 (0)1639 872693
E naomi.pope@corusgroup.com



Steel is the only common metal that will stick to a magnet - **look out for the magnet logo!**

SCRIB
steel can recycling information bureau